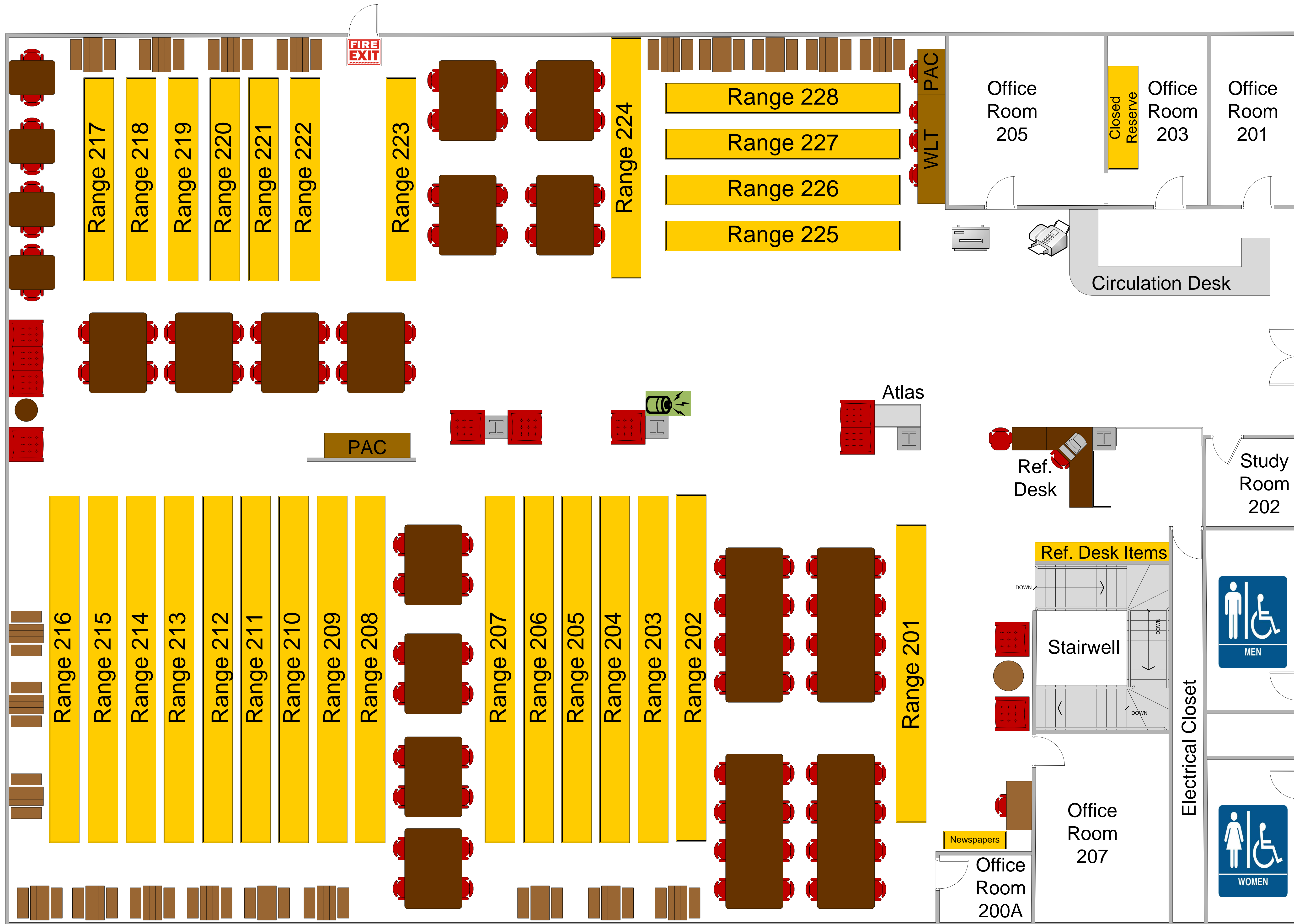


2ND FLOOR – CHASE COLLEGE OF LAW LIBRARY



Call Numbers by Range

Range 201	Reference Collection
Range 202	Kentucky State Materials
Range 203	Kentucky State Materials
Range 204	Ohio State Materials
Range 205	Ohio State Materials
Range 206	KF 16 – KF 62
Range 207	KF 62 – KF 101.8
Range 208	Federal Digests & Unbound Journals
Range 209	KF 101.8 – KF 105
Range 210	KF 105 – KF 120
Range 211	KF 120 – KF 135
Range 212	Atlantic Rep. – Pacific Rep.
Range 213	Pacific Rep. – South Western Rep.
Range 214	South Western Rep. – Southern Rep.
Range 215	KF 146 – KFI 1225
Range 216	KFI 1225 – KFM 4245
Range 217	KFM 4245 – KFN 5025
Range 218	KFN 5025 – KFN 5045
Range 219	KFN 5045 – KFN 5045
Range 220	KFN 5045 – KFP 45
Range 221	KFP 45 – KFT 30
Range 222	KFT 45 – KFZ 8625.2 & ALRs
Range 223	ALRs & Old State Reports
Range 224	Old State Reports & KF 154 – KF209
Range 225	Open Reserve
Range 226	Open Reserve Videos & Periodicals
Range 227	New Books, Career Dev. & Self-Help
Range 228	Looseleaf Materials

Second Floor
Lobby
And Elevators

KEY

- PAC = Public Access Comp.
- WLT = WestLaw Terminal
- = Fax Machine
- = Printer Station
- = Cell Phone Charging Station