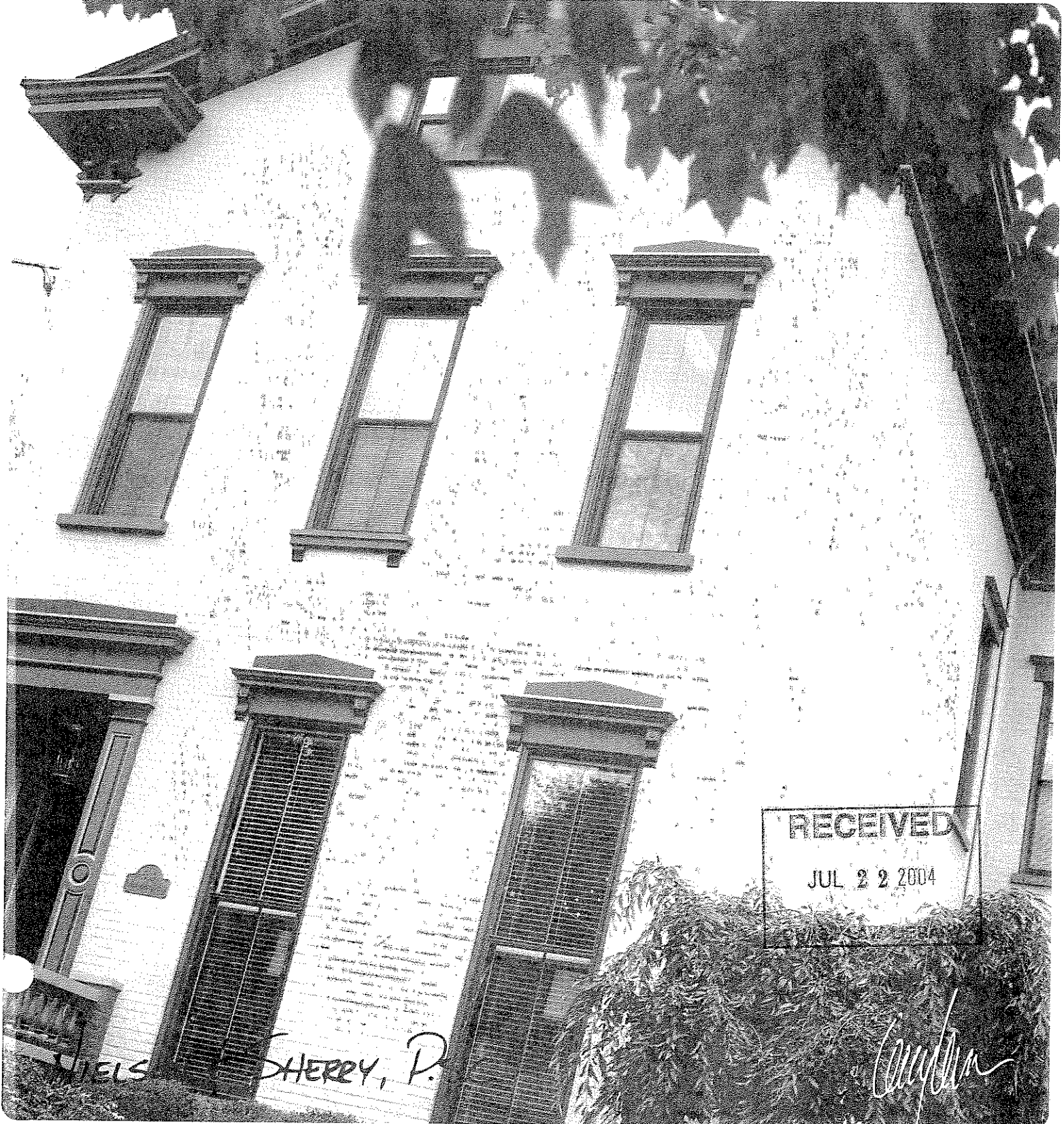


July  
2004



# ★ LEX LOCI ★

NORTHERN KENTUCKY BAR ASSOCIATION



RECEIVED  
JUL 22 2004

WELLS SHERRY, P.

*Campbell*

## QUICK TIPS

by Carol Brendeneyer

The Salmon P. Chase College of Law Library publishes a semi-monthly electronic newsletter for our faculty called Quick Tips. While it frequently highlights services available only to NKU employees, here are a few of our tips which could be of interest to any attorney.

The first tip comes from a press release from Yale University: <http://curiae.law.yale.edu> - (3 Mar) Yale Lillian Goldman Law Library recently launched a free beta site for U.S. Supreme Court records and briefs. According to site documentation, the library selects cases for inclusion "based on a ranking developed from citation data in historical and constitutional texts." In other words, if one of 15 authorities (see list at the site) cites to a case, the library will add the records and briefs to this archive. In addition to browsing the archive, you can search it by U.S. Reports citation, author, type of document, date or keyword.

Carol Brendeneyer is the Assistant Director of reference and research services at the Salmon P. Chase College of Law - Northern Kentucky University.

### **About the Curiae Project**

The Curiae Project provides Supreme Court records and briefs and other relevant materials free of charge on the Internet. Cases are selected for addition to the site based on a ranking developed from citation data in historical and constitutional texts.

The Curiae Project is located at the Yale Lillian Goldman Law Library and developed in cooperation with the Library of Congress, the Supreme Court of the United States, and the Supreme Court Historical Society. The Curiae Project is made possible by the generous financial support of the National Science Foundation, the Supreme Court Historical Society, and the Yale Lillian Goldman Law Library.

---

The Chase Library subscribes to a fairly new database Hein OnLine (HOL). HOL started as a journal database – mostly academic journals, but the ABA Journal is also included. The best feature of HOL is the .pdf format – you see the pages just like they appeared in the print version. The database also goes back to the beginning of the journal's run – LEXIS and WESTLAW generally go back only to the early 1980s – but the most recent volume is usually not included. HOL's newest feature is the Federal Register – in .pdf format – back to the beginning. HOL is available on the public terminals in the library and of course is available by subscription – firms can subscribe to only the Federal Register if they wish.

The Library has also added several new links to the Federal, Ohio, and Kentucky sections of our website - <http://www.nku.edu/~chase/library/index.htm>.

For more information about any Chase Library services, call the Reference Desk at 572-6484.

